

CERTIFICATE OF LOCATION OF GOVERNMENT CORNER

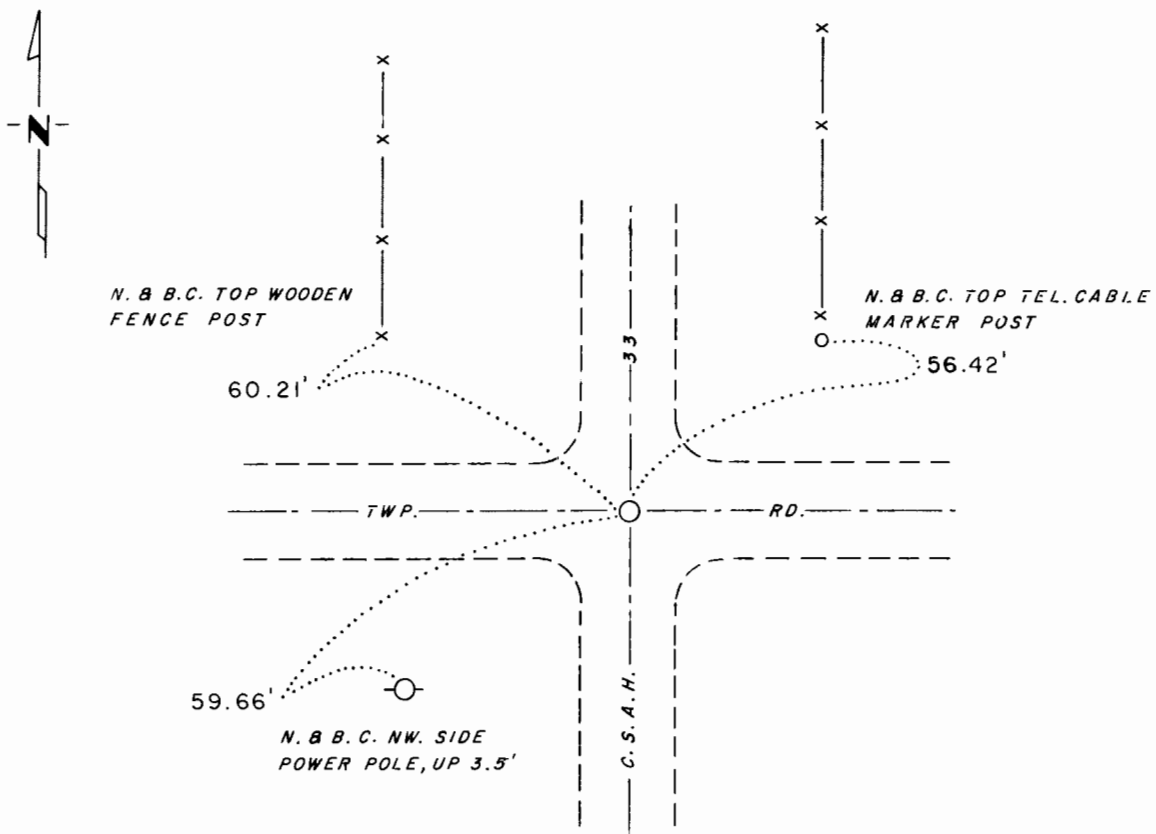
Northeast Corner of Section 3, Township 105, Range 41, 5th P.M.

STATE OF MINNESOTA, County of MURRAY

At the corner location shown on the sketch:

- On _____ found a _____
DATE
- left monument as found, lowered monument, removed monument (explain)
- On 11-10-70 placed a 5/8" Iron Pipe, Down 0.2'
DATE

SKETCH OF REFERENCE TIES



NOTE:
NEW TIES TAKEN ON 7-26-77

Statement of evidence relative to this corner location is on back of page.

I hereby certify that this document and the data contained herein was prepared by me or under my direct supervision.

Mary H. Stevenson 7-3-78
SIGNATURE DATE

Registration No. 12684

- Land Surveyor, Professional Engineer
- County Surveyor, County Engineer

OFFICE OF THE REGISTER OF DEEDS

County of _____

I hereby certify that this document was filed in the Reg. of Deeds office at _____ .M. on the _____ day of _____ A.D., 19 _____

Register of Deeds _____

By _____, Deputy

DOCUMENT NO. _____

Statement of Evidence:

Northeast Corner Section 3, T 105 R 41

Murray County

This corner was originally established by the U.S. General Land Office in 1861. The government notes show corner marked with a wood post set in mound of earth with pits and trench dug around the mound.

In May, 1977 the DNR Bureau of Engineering contacted the Murray County Offices of the Recorder, Auditor and Engineer for corner information.

At the Engineer's Office is a section book that was used by the old county surveyors. On the page for Section 34, T 106 R 41 is a survey by J. W. Woolstencroft in April, 1898. He shows this corner as a stake in grade with a distance of 80.08 chains (5285.28') to the southwest corner Section 34 and the quarter corner set at a split.

In 1957, the DNR assumed this corner at the intersection of roads.

In 1970, the DNR hired a backhoe to dig for this corner. They found nothing and an iron pipe was set at the road intersection.

On May 24, 1977, the DNR found a 5/8" iron pipe down 3" at the road intersection. Our distance to the northwest corner section 3 was 5290.86'. We are accepting the iron pipe in the road intersection as a perpetuation of the location of this corner because Woolstencroft in 1898, states the east quarter, south quarter and the southeast corner of Section 34 were all in road grades. As these roads were there in 1898, only 37 years after the original survey, we assume the roads were laid out on the section lines.

SS

164272

State of Minnesota,
County of Murray, }

ss

I hereby certify that the within instrument
was filed in this office for record on the

7th day of August A.D. 1981,

at 8:30 o'clock A.M., and was duly re-

corded as Microfilm Document No. 164272

Willard W. Ohme
County Recorder